



## **GWRRRA Region B NY District - Chapter D:**

*"There are no wrong turns,  
only "D" tours!"*



**Website: [www.gwrra-ny-d.org](http://www.gwrra-ny-d.org)**

## **MARCH 2011 NEWSLETTER**

### **CHAPTER D OFFICERS & STAFF**

CD: Bill & Julie Spencer  
[bandjspencer@gmail.com](mailto:bandjspencer@gmail.com)  
ACD: Bob & Chris Makai  
[rmakai10@yahoo.com](mailto:rmakai10@yahoo.com)  
TREASURER: Jim Tillotson  
Ph 315 243-2786  
MEC: Trish Thayer  
[pachi94@twcny.rr.com](mailto:pachi94@twcny.rr.com)  
RIDER ED.: John Van Deusen  
[vandeusen2@hotmail.com](mailto:vandeusen2@hotmail.com)  
COY 2011: Rick Reardon & Pam Pearson  
TECH. DIR.: Bill Downey

### **CHAPTER D COMMITTEES**

Newsletter: Bill Spencer  
Advertising: Henry Jedra &  
Jim Tillotson  
Sunshine: Shirley Hammond  
Photographer: Will Williams  
Historian: Sally Williams  
Patches & Pins: Laurie O'Brien  
Webmaster: Pam Pearson

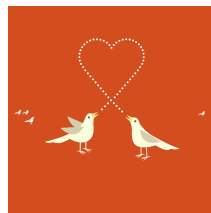
### **NY DISTRICT OFFICERS**

DD: Paul & Suzette Wood 585-343-8903  
[gwrranydd@gmail.com](mailto:gwrranydd@gmail.com)  
ADD: Bob & Cathy Turner  
631-368-8982 [ghostriderse@verizon.net](mailto:ghostriderse@verizon.net)  
ADD: Gary & Donna Cork  
[Dgcorkny@aol.com](mailto:Dgcorkny@aol.com)  
DIST. TREAS: Kathy DeGroff  
315-289-1308 [kdegroff64@yahoo.com](mailto:kdegroff64@yahoo.com)

### **IMPORTANT UPCOMING DATES**

- Mar 9 - Gathering @ Euclid Restaurant - 6:00pm Dinner,  
7:00pm Gathering*
- Mar 12 - Pizza Party @ O'Brien's home @ 5:00pm*
- Mar 20 - Breakfast with Chapter T @ Gristmill  
Restaurant, Parish - 9:00am*
- Apr 13 - Gathering @ Euclid Restaurant - 6:00pm  
Dinner, 7:00pm Gathering*
- Apr 28 - Dinner Ride to Tabatha's, B'ville 6:30pm*

### **ANNIVERSARIES**



*Mar 7- Linda DeMayo & Duke Barber*

### **BIRTHDAYS**

- Mar 2 - Liz Moran*  
*Mar 5 - Sheila Trypaluk*  
*Mar 15 - Laurie O'Brien*  
*Mar 17 - Debbie Goodson*  
*Mar 18 - Merwin & Ilse Backus*  
*Mar 22 - Kurt Field*



**DASH-FOR-CASH**  
**(2011)**

**3 pts as of 3/1/11**



 A black rectangular sign with the word "DETOUR" in white capital letters and a white arrow pointing to the right.

*...to our Chapter Directors...*

We continue to enjoy our time here in the Wilmington, NC area. We had a stretch of about 10 days of sunny and fairly warm weather that enabled us to go for some good rides with the Jedra's. We are up over 1500 miles since arriving. Last weekend we rode up to Selma for a Chili Cookoff sponsored by NC Chapter C-2. The good weather resulted in a turnout of over 325 people. It was good to see a parking lot full of bikes! This weekend we went up to Fayetteville. The temperature got up to 85 degrees! We dropped the ladies off at the mall and Henry and I spent some quality time at the Northern Tool store.

The news for Chapter D is very, very good! We are very pleased that Trish Thayer has been appointed as the MEC for our Chapter. This is a very important function and Trish will do a great job! We are also very pleased to have a Chapter COY...Rick Reardon and Pam Pearson. Rick and Pam have done a great deal for the Chapter and we appreciate their willingness to continue in this new capacity. With these positions filled, our Chapter remains very healthy and we look forward to a good year ahead. We were also very pleased to hear that the Rider-Ed Crash Scene Response program at the Chittenango Fire House was very well attended. While we didn't get all of the details, we understand there were about 30+ folks attending from Chapters D, C, and T. We would like to thank John and Pam Van Deusen for all of their work, as well as, Rick Reardon and Pam Pearson.

We have a bit of riding safety info to pass along from one of our rides down here. We were riding on a divided 4-lane road when a school bus coming in the opposite direction stopped to pick up a child and had the flashing lights on. Traffic on our side of the road was moving at 55+ mph with several vehicles close behind us, including the Jedra's and an 18-wheeler. Instinctively, we slowed down and managed to time it so that we didn't have to completely stop before the bus began moving again. Upon arriving back, we "Googled" the issue and discovered that by NC law, we did not have to stop, however, by NY law we would have. The difficulty with this situation is that we don't want to violate the law or place children at risk by not stopping, while at the same time we don't want to put ourselves at risk of being rear-ended by traffic on our side of the road. Having seen and anticipated the school bus, we were able to slow down and minimize the risk to ourselves and others.

We put together some possible travel plans to Wing Ding in Knoxville. Let us know if you are interested. Because this falls during the July 4 holiday week, we should probably not wait too long for room reservations in transit...especially in any mountain or resort areas. We did see in the Wing Ding Newsletter that there is a \$5.00 per person discount for group registrations of 10 or more people.

Something to keep in mind for later this year (or possibly next year)...the "Trikes and Bikes Rally" in Bowling Green, Kentucky Sept 30 thru Oct 2.

Also, NY Chapter N is sponsoring a trike course in Albany on April 23. Contact Al Stahl (518) 587-2420 if you would like to sign up.

We continue to monitor the news and weather in CNY and imagine everyone is long overdue for a break. Thanks again to all who are "holding the fort" for us while we are away!

Stay Warm and please drive safely!

Bill and Julie Spencer

 A black rectangular box with the word "DETOUR" in white capital letters, followed by a white arrow pointing to the right.

*...to our Assistant Chapter Directors...*

Hi everyone, I just wanted to ask if everybody is as tired of this winter as I am. I have been referring to it as the “never ending winter.” It will be coming to an end soon, and we will be out on two wheels again. I just wanted to remind everyone that with the bad winter comes bad roads. I am sure you have noticed all the pot holes that have popped up, as well as, heaving pavement. We will have to be very observant when we venture out in the spring. Also, I am sure that with all the budget cuts, the roads will still be broken up this summer. Although we will have something to look forward to with warm weather, we will have to dodge the winter bullets.

Submitted by Bob Makai

 A black rectangular box with the word "DETOUR" in white capital letters, followed by a white arrow pointing to the right.

*...to the Chapter D Co-ordinator for the 2011 NY/NJ District Convention...*

You can now make your room reservations! At the present time (2/28) there was a problem with online reservations. Check back frequently on the district website for updates: <http://www.gwrra-ny.org>

Vendors – thanks for your suggestions on possible vendors. Pam has compiled a list of 70 possible vendors. Return vendors have been contacted and e-mails will be sent to new vendors with convention details inviting them to participate.

If you have any rides in mind either long or short with a destination, please submit your ideas to me and I will forward on. We will need your participation and commitment for this convention to run smoothly. While the coordinator slots have been filled, there are still tasks that each of us can help with to lighten the load of the coordinators. There is a position for anybody and everybody to lend a hand - before and during the convention. We certainly want our New Jersey District to enjoy this convention like we did when we travelled there last year.

We look forward to everyone’s support. More updates to follow next month.

Submitted by Rick Reardon

 A black rectangular box with the word "DETOUR" in white capital letters, followed by a white arrow pointing to the right.

*...to our Chapter Technical Director...*

## **Waking the Sleeping Giant**

For the past few months, our motorcycles have been dormant. We prepped them back in October and November for the winter rest period. Hopefully, we were able to take care of any maintenance that needed to be done along with new upgrades we purchased.

We are now ready to reverse the winterizing project.

Reattach anything that was unplugged.

Check the air filter, exhaust and any area where mice could have taken up residence.

Check all electrical wires and connections for possible breakdown or critter abuse.

Check the battery for fluid, if not maintenance free. Clean battery posts and connectors. Bring battery up

to full charge if a battery tender was not kept on it during the winter.  
Check tires and rims. Bring tires up to full pressure.  
Go around and check all screws and bolts for snugness. Check all lights to be sure no bulbs need replacing. Check brake taillight function.  
Check under motorcycle for any fluid leaks along with checking clutch and brake fluid levels.  
Check oil and antifreeze levels.  
Check fork seals for leaks.  
Check brakes for wear and function, visually, before getting on the road.  
Give the bike a good washing and drying along with a wax job. This is a good time to check the windshield and dash panel lenses for cracking or fading.

This spring prep is what I would consider to be a very thorough T-Clock inspection. Hopefully, if all of this is completed in March or early April, then there won't be any unexpected repairs that will prevent your riding season from starting as scheduled.

*Written by William Downey – Tech Director*

**DETOUR** 

***...to our Chapter MEC (Membership Enhancement Coordinator)...***

Part of my responsibilities as MEC is to promote membership. One way to do this is by encouraging potential members of GWRRA to become a member of our Chapter D's "family". I also can check out the attendance membership roster to see whether a member has missed several gatherings...maybe they've lost interest, or, maybe they've had an illness which prevents them from attending our gatherings? I also can offer a friendly reminder to those members whose membership in GWRRA is about to expire in an attempt to keep them in the fold. For an example, I recently contacted a member whose membership had expired and he hadn't realized it. He was grateful for the call and assured me he is still interested in being part of our family. I'm sure there is more responsibility for me and I shall try my best to fulfill those responsibilities.

There is some very good news about overall membership...GWRRA membership has increased by 1.5% in the past year!

Trish Thayer ~ MEC Chapter D-NY

**DETOUR** 

***...to our Rider Education Directors...***

## **Slow Down for Spring Rain**

As spring rolls around in central New York, we hope for warm sunny days to ride. On many of the rides we could encounter rain. So what do we need to prepare when we get caught in those spring showers?

We can start by having the proper rain gear with us. But what is considered proper rain gear for motorcycle riding? Breathable type fabrics like Gore-Tex that prevent rain and wind from penetrating the outer layer, yet allow body moisture out is considered the most desirable. Easy to use zippers help with gloved hands. Snug closures at all openings, like the use of Velcro flaps, keep rain and wind out at highway speeds. Coats and pants should be snug fitting. This will prevent them from being flapping in the breeze which tend to wear out your gear, and it will also prevent getting them caught on extruding

objects on your bike like your foot pegs. Setting your foot down as you come to a stop and having your pant leg caught on the foot peg will cause your bike to become offset/unstable, and possibly cause it to fall over. Visibility is also an issue, ride to be seen as well as being able to see. Visors can also become fogged - use an anti-fogging product on them, or another option is having a visor with an anti-fog insert. If your rain gear isn't equipped with reflective material, consider wearing a high visibility traffic safety vest.

What we wear underneath our rain gear is just as important to staying dry and comfortable. A base layer should be worn against our bodies designed to wick away moisture, to prevent sweat from acting as a cooling agent, that can lead to hypothermia. On top of the base layer a breathable insulating layer such as fleece should be worn. Dressing in layers allows you to adjust by adding or subtracting as the weather changes. Try to minimize becoming too bulky on those chilly days, as this will reduce your mobility. A good option is to wear a heated jacket or vests.

Staying warm, dry and comfortable is an important part of riding in the rain. We also need to look at other areas to help us ride safer in the rain. When road surfaces get wet our grip or traction on the road is reduced. When we ride in the rain we need to be thinking traction or the lack there of. Commonly know as road grime, it can be made up of a number of things, ranging from drippings from engines such as antifreeze, motor oil and grease, matter from animal carcasses, food or garbage dropped from cars and rubber from tire wear, all account for making the early part of a rain dangerously slippery for us. If the rain is light enough and doesn't wash off the road, it may still stay slippery even as the road dries. Maintain a vigilant attitude in scanning looking to avoid water ponding in the road, manhole covers, painted road surfaces, crack filler, debris in the road, potholes, railroad crossings, even changing road surfaces can change the amount of traction you have. An example would be riding on asphalt and then transition onto concrete bridge deck, even more dramatic would be onto a steel deck bridge. When stopping, pay attention where you are stopping. Try to avoid stopping or stepping onto these slippery surfaces. Tires also play an important part of maintaining good traction in the rain. Make sure your tires are well maintained, and have the proper tire pressure before you ride. Know the condition of your tires. Are they new or at the end of their useful life? If your tires are at the end of the spectrum, understand that they may not hold the road as well as they did when they were new. What type of tire are you running? Touring tires are geared with rain in mind, and your sport tires are more geared for dry roads. Take a look at the grooves of your tires, the more you have the better they are for dispersing water out. If you have installed a wider tire they may be prone to hydroplane earlier than narrow tires you use. Your riding techniques should change when it starts to rain. Reduce your speed, brake, accelerate and corner smoothly. When approaching a curve begin to slow early to avoid hard braking. Minimize your lean angle, maintain throttle control. Don't accelerate or decelerate quickly in a curve. Consider taking a break when it first starts to rain, allowing the road grime to get washed away and giving you a chance to change into your rain gear.

Riding in the rain isn't something we look forward to doing, but it is one of the hazards we should anticipate. Being prepared for it, learning to ride in it, staying relaxed when we are in it and having the confidence of what to expect, will all help in riding in the rain. Above all Slow Down. For Pam and I, we have had some great rides come from riding through some rain storms, and I'm sure many more lay ahead. I had help with this article from the Motorcycle Consumer News article written by Ken Condon titled Rainy Day Rider dated October 2010, Proficient Motorcycling by David L. Hough Book, along with Advance Riding Course provided by GWRRA.

Pam & John Van Deusen  
Chapter D NY Rider Educators

# SPONSOR CORNER



## MORAN, MORAN & DAUPHIN INC.



**DAGGETT AGENCY  
FINGERLAKES ASSOCIATES**

**•315-253-9900•**

360 GRANT AVE. AUBURN NY 13021

WE REPRESENT SEVERAL INSURANCE COMPANIES AND CAN SHOP FOR THE BEST COVERAGE AT THE BEST PRICE.

**CALL FOR A FREE QUOTE  
TODAY!**



JANDRDINER.COM

**J & R DINER**

1 Park Street  
Lacona, NY 13083  
(Exit 37 Off Interstate 81)  
Open 5:00 a.m., 7 Days A Week

Owners:  
Alan & Linda Wart



(315) 387-5636

[www.suresigngraphics.com](http://www.suresigngraphics.com)



**Vinyl Lettering & Graphics**

- VEHICLE & TRUCK LETTERING
- BOATS, EQUIPMENT, ETC.
- CUSTOM SIGNS, DECALS & GRAPHICS
- VEHICLE MAGNETS • WINDOW CLINGS
- SAFETY & INDUSTRIAL SIGNAGE

**315-668-1077**

837 County Rte. 4, Central Square, NY

## SPONSOR CORNER



### TASSONE'S WINE GARDEN

**Mary Tassone**  
*General Manager*

8113 Dexter Pkwy.  
Baldwinsville, NY 13027

Phone (315) 635-5133  
Fax (315) 635-5846

[www.tassoneswinegarden.com](http://www.tassoneswinegarden.com)

---

## **CATERING AVAILABLE**

**\*Specializing in all Banquets\***

***Weddings, Anniversaries, Birthdays,  
Rehearsal Dinners, Graduations, etc.***

# SPONSOR CORNER



**BRENDA'S DINER**  
 RT. 31 PORT, BYRON N.Y. 13140 (315) 776-5070  
 NEXT TO BUS GARAGE  
 DAILY HOMEMADE SPECIALS & DESSERTS.  
 FRIENDLY COURTEOUS STAFF WAITING  
 TO SERVE YOU.  
 DINER STYLE ATMOSPHERE W/RESTAURANT  
 QUALITY FOOD.  
 STOP IN WE'D LOVE TO SERVE YOU!  
 (BANQUET ROOM AVAILABLE)

HATS SHIRTS JACKETS FLEECE  
**Logos PLUS!**  
 Embroidery  
 Screen Printing  
 Promotional Items  
 Signs & Banners  
 GROUPS  
 FIREFIGHTERS  
 TEAMS  
 BUSINESS  
 On-Time Quality  
 at Great Prices!  
 RUSH JOBS...  
 OUR SPECIALTY!  
 Topper Sez  
 Call Now!  
 432.5065  
 432-5066 fax  
 108 SILVER ST  
 E. SYRACUSE, NY 13057  
 e-mail [logosplus@aol.com](mailto:logosplus@aol.com)  
**WWW.LOGOSPLUSLTD.COM**

BAGS KEY TAGS MUGS  
 PENS GOLF BALLS

**SEA 400** WATERCRAFT  
**YAMAHA**  
**SPORT-MANN SUZUKI / HONDA**  
 6225 E. TAFT RD. • N. SYRACUSE, NY 13212  
 (315) 458-8974 FAX (315) 458-6133  
[www.sport-mann.com](http://www.sport-mann.com)

**SUZUKI**  
 The ride you've been waiting for.™

**HONDA**  
 Come ride with us.

**Fox's Discount Parts, LLC**  
 Parts & Accessories for  
 Snowmobiles - ATV's  
 Motorcycles - Watercraft



Guy & Kira Fox

2788 State Route 49  
 West Monroe, NY 13167  
 315-668-9484 ~ 800-866-9424

Visa  
 Mastercard - Discover  
 UPS Delivery

OPEN 24 HRS.  
 DIESEL GAS

**Grist Mill Restaurant**



INTERSTATE 81 - EXIT 33  
 P.O. BOX 514, PARISH, N.Y. 13131

MIAT LUTZ  
 Gen. Manager

RESTAURANT  
 625-7691

Family and Fine Dining  
 Homemade Desserts  
 Beer and Wine  
 Pizza

Reservations accepted for:  
 Parties •  
 Meetings •  
 Luncheons •

**Tabatha's Family Tree Restaurant**



Tabatha Babbitt 315-638-0315 Patricia Personiti  
 3160 Cold Springs Rd. • Route 370 • Baldwinsville, NY 13027  
 Open for dinner - Tuesday thru Sunday -  
 Closed Monday

Open 24 Hours  
**Good Golly's Family Restaurant**

OPEN 24 HOURS  
 (315)668-3861

2916 Route 49  
 Central Square,  
 New York 13036

Full Menu: Breakfast  
 Lunch- Dinner  
 Daily Specials

Just off Rt 81 on Rt 49 - Central Square, NY



SPONSOR CORNER



# Get The INSURANCE Coverage You Need

- *Absolute Lowest Down Payment*
- *Cycle - Auto - Home - Boat*
- *Visit Our Web Site Today -  
[www.myagencyofcny.com](http://www.myagencyofcny.com)*

**MY** *Agency*

Of CNY Inc.  
FORMERLY THE DAGGETT AGENCY

**FREE  
PHONE  
QUOTES**

*North Side  
Office*

**422-2203**

**824 N. State St., Syracuse - Park Free In Our Lot**